

The background of the slide features a blurred image of numerous metal fittings, likely elbows or tees, arranged in rows. A large, semi-transparent green circle is positioned in the upper right quadrant. On the left side, there is a large, light gray hexagonal frame that is partially cut off by the edge of the slide. The company logo is located in the upper right area, featuring the text 'WORLD WIDE FITTINGS' in a bold, white, sans-serif font. The word 'WORLD' is on the top line, 'WIDE' is on the second line, and 'FITTINGS' is on the third line. A small, white silhouette of a globe is integrated into the letter 'O' of 'WORLD'.

**WORLD  
WIDE  
FITTINGS**

Engineering Innovation. Leading Service. Trusted Since 1950.

# A Global Leader in Precision and Performance

Founded in 1950, World Wide Fittings Inc. has built an unparalleled reputation as a global manufacturer of high-quality steel and stainless steel hydraulic tube and pipe fittings.

Our commitment continues to focus on delivering excellence in every product and service we offer. Since our inception, we have remained steadfast in our dedication to expanding our facilities, capabilities, services, and employee base. This ensures that we stay aligned with the evolving needs of our customers, while also being prepared to adapt to any changes within the needs of the industries we serve. Today, we stand as a leading provider of innovative solutions that cater to a broad array of industries across the globe.

With 11 strategic locations worldwide, over 500,000 square feet of manufacturing and warehouse space, and a production capacity exceeding 300 million components annually, we ensure that our products are available wherever and whenever our customers need them.

We are more than just a supplier—we are a trusted partner, dedicated to engineering performance and delivering value with every connection we make.



[HOME PAGE](#)

[Who We Are](#)

[Industries Served](#)

[Our Products](#)

[Product Specifications & Quality Control](#)

[Engineering](#)

[Our Dedication to OEMs](#)

[Distributor/ Representative Network](#)

[Support & Locations](#)

[Why We're Your Best Choice](#)

[Connect With Our Team](#)

# Precision Solutions for Every Industry

Our expertise spans across a broad spectrum of industries, where we supply essential components that ensure efficiency, reliability, and performance. Whether you are in construction, agriculture, or military operations, World Wide Fittings provides the precision and quality you demand.



## We proudly serve:

- 

**CONSTRUCTION EQUIPMENT:**  
Building the infrastructure of tomorrow.
- 

**AGRICULTURE EQUIPMENT:**  
Supporting the machines that feed the world.
- 

**MINING EQUIPMENT:**  
Powering the exploration of natural resources.
- 

**MACHINE TOOLS:**  
Enhancing the tools that shape our future.
- 

**TRANSPORTATION EQUIPMENT:**  
Keeping the world moving smoothly.
- 

**FORESTRY EQUIPMENT:**  
Sustaining the tools that maintain our forests.
- 

**POWER GENERATION:**  
Ensuring the flow of energy.
- 

**MARINE EQUIPMENT:**  
Navigating the demands of the seas.
- 

**MILITARY EQUIPMENT:**  
Providing reliability in the most critical applications.
- 

**TUBE BENDING AND FABRICATION:**  
Custom solutions for precision fabrication.
- 

**HOSE ASSEMBLY MANUFACTURERS:**  
Connecting the essentials.
- 

**COMPRESSOR MANUFACTURERS:**  
Sealing in the power of compression.

[HOME PAGE](#)

[Who We Are](#)

[Industries Served](#)

[Our Products](#)

[Product Specifications &  
Quality Control](#)

[Engineering](#)

[Our Dedication to OEMs](#)

[Distributor/  
Representative Network](#)

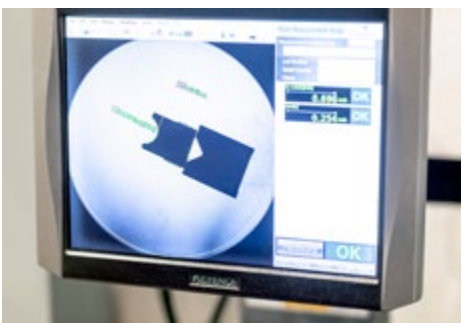
[Support & Locations](#)

[Why We're Your Best Choice](#)

[Connect With Our Team](#)

# Crafted with Precision, Delivered with Excellence

At World Wide Fittings, we leverage our expertise in the manufacture of a vast range of steel and stainless steel tube and pipe fittings, engineered to meet or exceed the strictest industry standards, including ISO and SAE. Every product is crafted with precision to ensure it performs flawlessly under pressure, providing you with the reliability you need to keep your operations running smoothly.



[HOME PAGE](#)

[Who We Are](#)

[Industries Served](#)

[Our Products](#)

[Product Specifications & Quality Control](#)

[Engineering](#)

[Our Dedication to OEMs](#)

[Distributor/ Representative Network](#)

[Support & Locations](#)

[Why We're Your Best Choice](#)

[Connect With Our Team](#)



## Pipe Fittings

Our Steel Pipe Fittings are commonly used with countless industrial applications. Machined from cold-drawn bar stock, our straight fittings, along with forged shape fittings like elbows, tees, and pipe, are designed for maximum durability and leak resistance. Our fittings feature NPTF threads that deliver unmatched holding power, making them the ideal choice for high-pressure environments.

[SHOW ME MORE](#)

## O-Ring Face Seal Fittings

When you need a leak-proof seal, look no further than our O-Ring Face Seal Fittings. Each fitting comprises meticulously engineered bodies, O-rings, nuts, and sleeves, ensuring a secure connection that withstands the most demanding conditions.

[SHOW ME MORE](#)



## Flareless Fittings

Engineered for high-pressure systems, our Flareless Fittings, also known as compression fittings, provide a robust solution without the need for flaring. With just three components—bodies, nuts, and sleeves—these fittings deliver efficiency and reliability in even the toughest environments.

[SHOW ME MORE](#)

## Beaded Hose Fittings

Our Beaded Hose Fittings are precision-machined from bar stock for straight fittings and forged for shaped fittings like elbows and tees. Conforming to SAE J1231 specifications, these fittings guarantee consistent performance, making them a reliable choice for various applications.

[SHOW ME MORE](#)



## Tube End Fabrication Fittings

When precision and performance are critical, our Tube End Fabrication Fittings deliver. These fittings are designed to meet exacting standards, ensuring a seamless connection every time. Whether you need standard or custom configurations, our solutions are engineered to optimize your system's performance.

[SHOW ME MORE](#)

## Flange Fittings

Our Flange Fittings are crafted to handle high-pressure and high-temperature environments, offering secure connections that stand the test of time. Designed for both inch and metric systems, these fittings are an essential component for any industrial operation requiring reliable, high-strength connections.

[SHOW ME MORE](#)



## International Conversion Adapters

Navigating the complexities of global operations is easier with our International Conversion Adapters. These fittings allow seamless integration of systems across different standards, providing the flexibility you need in an interconnected world.

[SHOW ME MORE](#)

## Plug & O-Rings

Our Plug & O-Rings are designed for precision sealing in a variety of applications. Made from high-quality materials, they ensure that your system remains leak-free, offering peace of mind in critical operations.

[SHOW ME MORE](#)



## Stainless Steel Fittings

For industries where corrosion resistance is paramount, our Stainless Steel Fittings provide the durability and longevity required in the harshest environments. Engineered to ISO and SAE standards, these fittings offer superior performance in marine, chemical, and other demanding applications.

[SHOW ME MORE](#)

## Gauge Port Adapters

Our Gauge Port Adapters are essential for monitoring system performance. Designed for easy integration, these adapters allow accurate pressure measurements, helping you maintain optimal operation in your systems.

[SHOW ME MORE](#)



ISO: 9001:2015  
ISO: 14001



# A Commitment to Quality, from Design to Delivery

At World Wide Fittings, quality is more than  
a commitment—it’s our driving force.

Our state-of-the-art manufacturing processes are complemented by rigorous testing protocols, including burst, impulse, cleanliness, and salt spray tests, ensuring that every product meets or exceeds industry standards. Our ISO-certified facilities operate under continuous improvement methodologies, guaranteeing that each fitting is crafted with precision and delivered with reliability.

As active members of the SAE, we are at the forefront of industry advancements, ensuring our products reflect the latest standards and innovations. Whether it’s a standard fitting or a custom-engineered solution, you can trust that our products will perform flawlessly under pressure.



WORLD WIDE FITTINGS INC.

HOME PAGE

Who We Are

Industries Served

Our Products

Product Specifications &  
Quality Control

Engineering

Our Dedication to OEMs

Distributor/  
Representative Network

Support & Locations

Why We’re Your Best Choice

Connect With Our Team

# Innovation Through Expertise

Our engineering team is the heart of our innovation.

By designing and developing our own production equipment in-house, we maintain full control over our manufacturing processes, allowing us to adapt quickly to changing market demands. We leverage cutting-edge technology and automation to enhance production efficiency, reduce costs, and ensure product conformity without the need for manual inspection.

As a leader in the industry, we offer more than just products—we provide solutions. Our engineering experts are available to evaluate hydraulic systems, eliminate unnecessary components, reduce leak paths, and optimize fluid connectors. For specialized needs, we offer custom fitting designs and prototype samples, ensuring you receive the best possible solution for your application.

[HOME PAGE](#)

[Who We Are](#)

[Industries Served](#)

[Our Products](#)

[Product Specifications & Quality Control](#)

[Engineering](#)

[Our Dedication to OEMs](#)

[Distributor/ Representative Network](#)

[Support & Locations](#)

[Why We're Your Best Choice](#)

[Connect With Our Team](#)



# Precision. Reliability. Partnership.

At World Wide Fittings, our commitment to Original Equipment Manufacturers (OEMs) & our Distributors is unwavering.

We understand the critical role our components play in your operations, and we strive to be more than just a supplier—we are your partner in delivering excellence.

We provide tailored solutions that meet your specific requirements, backed by rigorous quality control and a global network that ensures timely delivery.

Our engineering team collaborates with yours to develop innovative, high-performance fittings that exceed industry standards.

With World Wide Fittings, you're choosing precision, reliability, and a partner dedicated to your success.

[HOME PAGE](#)

[Who We Are](#)

[Industries Served](#)

[Our Products](#)

[Product Specifications & Quality Control](#)

[Engineering](#)

[Our Dedication to OEMs](#)

[Distributor/ Representative Network](#)

[Support & Locations](#)

[Why We're Your Best Choice](#)

[Connect With Our Team](#)



# Your Local Connection to Global Quality

World Wide Fittings’ extensive distributor and representative network ensures that our products are within reach no matter where you are. We partner with trusted distributors who share our commitment to quality and customer service, providing you with local access to our global expertise.



[HOME PAGE](#)

[Who We Are](#)

[Industries Served](#)

[Our Products](#)

[Product Specifications &  
Quality Control](#)

[Engineering](#)

[Our Dedication to OEMs](#)

[Distributor/  
Representative Network](#)

[Support & Locations](#)

[Why We’re Your Best Choice](#)

[Connect With Our Team](#)

# Global Presence, Local Support

With 11 facilities across three continents, World Wide Fittings is wholly owned and uniquely positioned to offer unparalleled support and logistical expertise. Our global network ensures that no matter where you are, you can rely on us for timely and efficient delivery of our high-quality products. All facilities are managed and manned by World Wide employees to ensure we meet all our quality standards.



Over 500,000 square feet of manufacturing and warehouse space.

EUROPE:

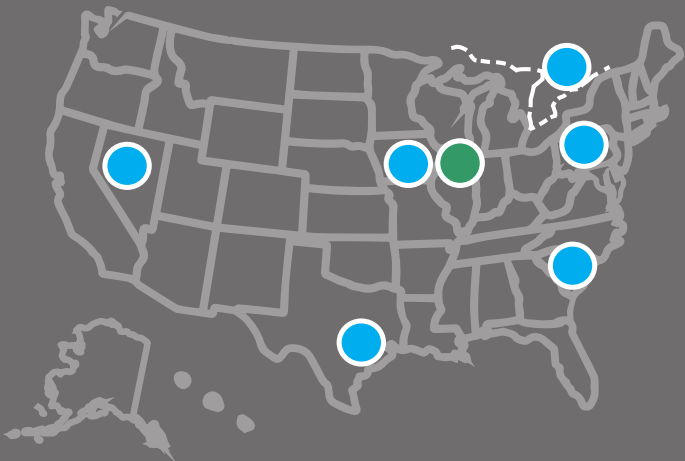
Birmingham, UK

ASIA:

Luxu, CHINA (2)  
Suzhou, CHINA

NORTH AMERICA:

Allentown, PA USA  
Des Moines, IA USA  
Greenville, SC USA  
Houston, TX USA  
Reno, NV USA  
Toronto, ONTARIO CANADA  
Vernon Hills, IL USA (Headquarters)



[HOME PAGE](#)

[Who We Are](#)

[Industries Served](#)

[Our Products](#)

[Product Specifications &  
Quality Control](#)

[Engineering](#)

[Our Dedication to OEMs](#)

[Distributor/  
Representative Network](#)

Support & Locations

[Why We're Your Best Choice](#)

[Connect With Our Team](#)

# Unmatched Quality, Unparalleled Service

When you choose World Wide Fittings, you're choosing more than just a supplier—you're choosing a partner committed to your success. Our dedication to quality, innovation, and customer satisfaction sets us apart from the competition. We operate with a simple yet powerful mission:



“To consistently exceed customer expectations through continuous improvement in our products, processes, and people.

- Sean McCarthy, President

This mission drives everything we do, from the design and manufacturing of our products to the way we interact with our customers. With our extensive industry experience, ISO-certified facilities, and a global network of support, we are uniquely positioned to meet your needs with precision and reliability.

[HOME PAGE](#)

[Who We Are](#)

[Industries Served](#)

[Our Products](#)

[Product Specifications &  
Quality Control](#)

[Engineering](#)

[Our Dedication to OEMs](#)

[Distributor/  
Representative Network](#)

[Support & Locations](#)

[Why We're Your Best Choice](#)

[Connect With Our Team](#)

# Let's Build Success Together

At **World Wide Fittings**, we're ready to support your business with the expertise and dedication you deserve. Whether you need technical assistance, product information, or help with a custom solution, our team is here to connect with you. Contact us today to learn more about how we can help you achieve your goals.

Contact Us:

847-588-2200

[sales@worldwidefittings.com](mailto:sales@worldwidefittings.com)

[worldwidefittings.com](http://worldwidefittings.com)

[HOME PAGE](#)

[Who We Are](#)

[Industries Served](#)

[Our Products](#)

[Product Specifications &  
Quality Control](#)

[Engineering](#)

[Our Dedication to OEMs](#)

[Distributor/  
Representative Network](#)

[Support & Locations](#)

[Why We're Your Best Choice](#)

[Connect With Our Team](#)





# WORLD WIDE FITTINGS

[worldwidefittings.com](http://worldwidefittings.com)

HOME